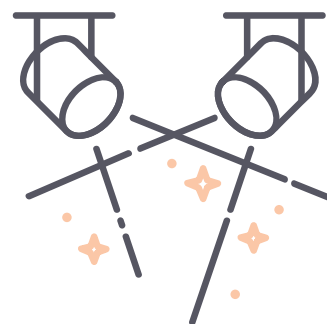


INCLUSIVE | MAT IN THE SPOTLIGHT



19TH MARCH 2021

WELCOME

Since our return to full school opening, I have been lucky enough to spend some time in each school. I have been very impressed by the way in which our children and staff have embraced the opportunity to be back together, learning and teaching with their friends and colleagues. Safety measures are still in place and we must not forget that the virus is still a very real danger. As parents, you can help keep our community as safe as possible by conducting twice-weekly testing using rapid lateral flow tests. These are now available for free, to all families and households with primary aged children. More information can be found [here](#). The nearest pickup site to Watford is King George V Park, Chaffinch Lane, Rickmansworth Road, Watford, WD18 9QD. Home test kits can be picked up between 1:00pm - 8:00pm daily.

James Roach
@CEOInclusiveMAT

WATFORD OBSERVER - WORLD BOOK DAY

It was lovely to see Cherry Tree Primary School featured in the Watford Observer's 'Hertfordshire Schools Celebrate World Book Day' article. You can access the full article [here](#).

Cherry Tree Primary



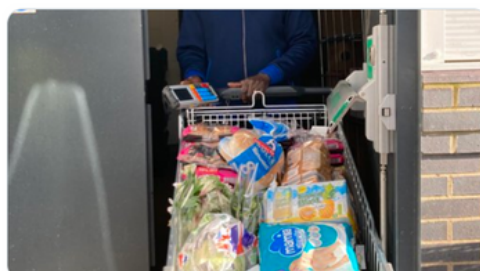
THE FIRST NATIONAL NURTURING SCHOOLS AWARD TRUST

We are immensely proud to announce that the Inclusive Multi Academy Trust is the first Trust in the United Kingdom to have all of its schools receive the National Nurturing School Award. Last week Cherry Tree joined Beechfield in receiving their award for the first time. Laurance Haines (the first school in the UK to receive the award in 2017) also became the first school in the country to receive a reaccreditation. The accolade is awarded to schools who demonstrate exemplary practice in embedding a nurturing culture throughout their school, enhancing teaching and learning by focusing on emotional needs and development in a whole-school environment. James Roach CEO of the Trust said "pastoral provision has always been an underpinning principle of everything we do across the Inclusive Multi Academy Trust. These individual awards highlight how well the schools cater for their own communities. However, to be the first Trust in the UK to have this award across all of our schools means that our shared pastoral ethos unites us. It really shines a light on the phenomenal work and the exceptional standards delivered by each and every staff member in the Trust. Huge congratulations to every single member of our staff, pupils and parents."

THANK YOU ALDI

Huge thank you to Aldi Watford for continuing to support Laurance Haines with food donations for their food bank. It is with the help and support of local businesses that we are able to help our school communities.

Nurture @LHSNurture · Mar 15
Thank you @AldiUK Watford for donating food for our food bank @AldiUK
@PSTLHS @HeadLHS @LHS_Watford @CEOInclusiveMAT
@nurturetweets



WATFORD SALVATION ARMY

Beechfield Pastoral and Mental Health Lead, Alison Hayward, has announced that she will be taking part in a skydive, on the 10th July, to raise money for our charity partners, Watford Salvation Army.

All donations will help the Watford Salvation Army to support Watford's most vulnerable and disadvantaged families.

The challenge has already raised nearly £1000 and we would really love to help Alison exceed that figure.

If you are able to donate, you can do so via the [Just Giving Page](#).



CURRENT VACANCIES

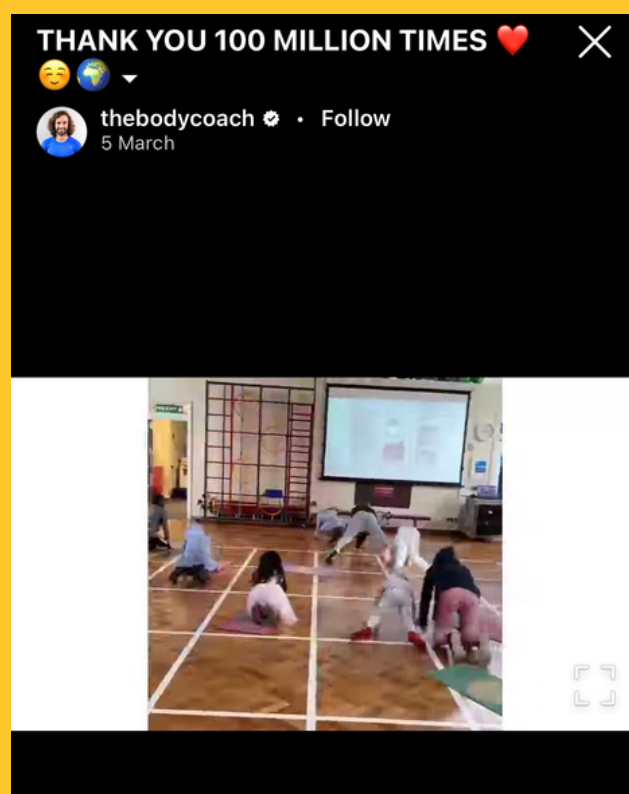
KS2 Teacher - Beechfield School

All of our vacancies can be accessed via our [current vacancies page](#).

SPOTTED - THE BODY COACH

Beechfield School was spotted this week in a post by Joe Wicks, The Body Coach, thanking the public for their support with his virtual PE lessons throughout lockdown.

In the video posted to Instagram there is a short clip of children at Beechfield taking part in one of his online PE sessions. [You can watch the video in full here](#).



SOCIAL MEDIA

In addition to Twitter and Facebook, you can now follow us on [LinkedIn](#) and [Instagram](#)

Follow us to keep up to date with all the latest news from our Trust.



INCLUSIVE | MULTI ACADEMY TRUST



Tel:
01923 221269

Email:
admin@inclusivemat.co.uk

Web:
www.inclusivemat.co.uk

Twitter:
[@inclusiveMAT](https://twitter.com/inclusiveMAT)

Facebook:
[InclusiveMAT](https://www.facebook.com/InclusiveMAT)