

# ABOUT WATFORD



**WATFORD**  
BOROUGH  
COUNCIL

Autumn 2018

**intu** Watford

**Town centre  
improvements  
enter final phase**





**Peter Taylor**  
Elected Mayor of  
Watford

[watford.gov.uk/  
electedmayor](http://watford.gov.uk/electedmayor)

**I've just completed my first few months as Elected Mayor of Watford and what a summer it has been! An unexpected World Cup run, led by Watford-born Gareth Southgate. Along with the record high temperatures, this was a great backdrop to our free Big Events across the town.**

They included our popular Imagine Watford Festival, Big Screen, Big Beach and Big Sports Day. I am so proud that at a time of increasing pressure on council finances, we are still able to put on events like this to be enjoyed by everyone across our town. You can read about more events going on page 28 of this edition of About Watford.

I am determined to be a Mayor for everyone in this town, whatever your background or political views. That is why I have been spending my summer out and about in Watford listening to residents. It is crucial that I know what the main local concerns are and how residents would like to make Watford an even better place to live. I will be hosting more listening events throughout the year.

One thing that often comes up at my 'Listening Events' is development in our town. People understand the need for more homes but they are also concerned about the impact that this can have on our roads, schools and doctors surgeries. That is why we want as many people as possible to get involved with our Local Plan consultation, featured in this magazine. It is no secret that with a growing population and pressure from central government, more homes will have to be built in Watford.

It is a good thing that people are attracted to our town because of our schools, parks and transport connections. Watford's Local Plan is a really important way for us to be able to decide how our town will grow and change. We need to work together to decide what kind of homes we need, what sort of infrastructure we need to have and where new homes could go. Decisions about the future of Watford should be made here in our town, not by anyone else.

Please have your say on the future of Watford by attending one of our consultation events across the town or by visiting our new Local Plan website at **[watfordlocalplan.co.uk](http://watfordlocalplan.co.uk)**.

Make sure that your voice is heard!



Published by Watford Borough Council. This magazine is printed on chlorine free paper, made from sustainable forests and costs 22p to print and distribute. Please recycle it when you have finished with it. This magazine is available on our website. It can be downloaded as a PDF document and also as an audio file.

# W ABOUT ATFORD

## Features

➤	<b>New-look town centre</b> - Development enters final phase .....	4
➤	<b>Watford's Local Plan</b> - Issues and options for our town .....	6
➤	<b>Watford Riverwell</b> - Cleaning up the Colne and new family apartments .....	7
➤	<b>Upgrading our leisure centres</b> - Investing in Central and Woodside .....	8
➤	<b>100 years of remembrance</b> - Events to commemorate the centenary of the end of World War I .....	9
➤	<b>Watford's parks</b> - More Green Flag success .....	10
➤	<b>CCTV</b> - Keeping Watford safe .....	11
➤	<b>Pope's Yard</b> - It's coming home! .....	12
➤	<b>Chairman's charities</b> - Supporting the good work in our town .....	14
➤	<b>Winter in Watford</b> - Four page pull out guide for all the festive fun happening in and around the town .....	15
➤	<b>Watford Workshop</b> - No ordinary place to work .....	19
➤	<b>Reducing the need for single use plastics</b> - Some handy tips to help the environment .....	20
➤	<b>Woodside Playing Fields</b> - Explore the exciting proposals .....	22
➤	<b>Short film festival</b> - Watford's first ever event a huge success .....	24
➤	<b>Register to vote</b> - Have your say .....	26
➤	<b>Changing lives</b> - With a little spare change .....	27
➤	<b>What's on!</b> .....	28
➤	<b>Your councillors</b> .....	31

**WE'RE HERE TO HELP IF YOU  
HAVE ANY QUESTIONS**

**watford.gov.uk**

Email: [enquiries@watford.gov.uk](mailto:enquiries@watford.gov.uk)

Telephone: 01923 226400

Watford Borough Council, Town Hall, Watford, WD17 3EX

Customer Service Centre open Monday to Thursday  
8.45am to 5.15pm and Friday 8.45am to 4.45pm



**watfordcouncil**

Sign up to our  
e-newsletter to  
receive  
information of  
interest to you.  
Visit  
**[watford.gov.uk/  
newsletter](http://watford.gov.uk/newsletter)**

# The new-look Watford town centre is almost here

**Soon, dodging construction barriers and pin-balling your way around the crowds in the High Street will be a distant memory. You've put up with a lot, Watford, and now the end is in sight!**



**Autumn 2018 is a landmark moment for the town, with the newly renovated High Street opening and the grand intu extension being unveiled.**

The plans for the intu extension were released back in 2015 and now we are close to seeing the vision realised. The £180million redevelopment is set to put Watford in the top 20 shopping and leisure destinations in the country, ranking alongside the likes of Bristol and Edinburgh.

For years, residents have lamented the lack of a cinema in the town centre, so the arrival of a nine-screen IMAX as part of the redevelopment has created a big buzz. A real bonus is the introduction of a Hollywood Bowl - together, the two will take up two thirds of the new intu extension.

**Thursday 27 September** saw the new 86,000 square foot Debenhams superstore open.



Spread across three floors, it's the first major opening of the intu extension. Shoppers were treated to some lovely surprises, delightful free samples and a visit from well-loved Debenhams designer Julien Macdonald!

Watford will now see a whole series of phased openings of sought after shops, restaurants and bars, including Jack Wills, Superdry, YO! Sushi, TGI Fridays, The Florist, Las Iguanas and many more.

There's no doubt that the intu development, with its eclectic and striking design, will change the face of our High Street. The council was clear that a sparkling

new centre must be accompanied by an equally smart looking High Street. That's one of the reasons why, in partnership with Hertfordshire County Council and Watford BID, we've invested so much in sprucing up the High Street.

We're banishing unwanted clutter, laying attractive new paving and slashing the number of vehicles coming through the town centre. Add to that new permanent disabled parking bays nearby and a new dedicated taxi rank just behind the High Street itself.

The result will be a brighter, more spacious High Street, which is cleaner and easier to get around.



# Have your say on the future of Watford

**Watford is facing some difficult decisions about the future, which is why it's important you tell us what you think at [watfordlocalplan.co.uk](http://watfordlocalplan.co.uk).**

**We're starting to prepare the town's new Local Plan, which will set a vision for Watford up to 2036 and guide planning decisions and new development. It will set out key issues, such as where housing should go. Up until 19 October 2018, you can have your say on this first phase of the Local Plan.**

One of the biggest challenges we're facing is providing new homes for our growing population, with very little land available. The government has said Watford must provide 770 new homes every year

up until 2036. While saying no to growth is not an option, we want to work with residents to decide how best to manage it and shape the town for the future.



Peter Taylor, Elected Mayor of Watford, said: "We need residents to work with us on this new Local Plan to ensure Watford continues to be a vibrant and thriving town. Managing the growth that is coming is going to be tricky but we are determined to make it work in Watford's favour. Part of that means making sure that the right transport and infrastructure is in place, and that Watford residents continue to have access to excellent employment opportunities."

Tell us what you think and find out more at [watfordlocalplan.co.uk](http://watfordlocalplan.co.uk)

## First Hart Homes development almost complete

**Watford Borough Council and Watford Community Housing's ground-breaking joint venture, Hart Homes, has unveiled the first of its much-needed affordable housing this autumn.**



Hart Homes was created to develop and manage quality homes for people in Watford and its first scheme will deliver 36 affordable apartments at Croxley View. The first of these have now opened and new residents are already making themselves at home.

Hart Homes is looking at other opportunities to provide more of the affordable homes Watford people are crying out for, and will be consulting with residents about these over the coming months.

Tina Barnard, Chief Executive of Watford Community Housing, said: "We are really proud to be delivering much-needed affordable

homes through our innovative joint venture with Watford Borough Council. The new homes at Croxley View have been built to a high standard and we will continue to work closely together to build high-quality housing for those who are most in need."

Elected Mayor of Watford Peter Taylor added: "By working in partnership, the council and Watford Community Housing are making better use of our land and delivering the modern and affordable homes our town needs. We're enabling people to have decent homes of their own and creating strong communities, which is so important."

# Watford Riverwell regeneration moving on fast

## River Colne clean up making a difference

**An important part of the Watford Riverwell development and regeneration scheme in west Watford is to clean up the stretch of the River Colne that runs through the Riverwell site.**



Last year, the scheme's partners - Watford Borough Council, Kier Property and West Hertfordshire Hospitals NHS Trust - joined schoolchildren and river expert and environmental enthusiast Sandy Belloni, from local charity Watford in the Water, to kick start the river clean-up.

One year on and the river is unrecognisable and well on the way to forming part of the green, open spaces that are a significant part of the new community being created. The Wild Trout Trust's report on the River Colne clean-up, said: "Many urban restoration



groups have reported a marked decrease in litter entering the river once existing litter has been removed. Put simply, rivers are less likely to be treated as dumping sites if they no longer look like dumping sites".

## Family apartments taking shape at Woodlands

**Creating new homes for first time buyers, couples and young families is at the heart of Watford Riverwell. The new homes at Woodlands, the first to be developed, feature spacious apartments and children's play equipment within a woodland setting. This inspiring location, surrounded by protected green parkland and close to Watford town centre, makes Woodlands the ideal place to put down roots and raise a family.**

The stylish one, two and three-bed homes will be completed next year, and you can already experience

what they will be like to live in at the new show home and marketing suite. These spacious, bright apartments provide open plan living, high-quality fitted kitchens and bathrooms and modern heating and cooling system to deliver the creature comforts expected by today's homebuyers.

Following in the footsteps of our European neighbours more and more people are opting for apartment living.

Elected Mayor Peter Taylor explains: "Modern day life is hectic, so we're seeing families choosing

not to have a garden because they don't have time to care for it. Instead, people are heading to their local parks or making the most of communal spaces, which are maintained for them. Plus, people like the very close knit community that springs up around family apartments like Woodlands - they feel safe and supported."



For more information on Watford Riverwell visit [riverwell-regeneration.com](https://riverwell-regeneration.com)

# Residents to benefit from boost to Watford leisure centres

**Watford Borough Council and Everyone Active's new 15-year contract will see £1.8million invested to upgrade the facilities at both Watford Woodside and Watford Central Leisure Centres.**

**The first phase of the exciting redevelopment project across the two sites will be completed soon - by the end of autumn. The result? More people being given more opportunities to get active.**

## What's changing at Woodside Leisure Centre?

Visitors will soon notice that it's easier to access group exercise classes following the installation of a dedicated group cycling studio, as well as an extension to the current fitness studio.

New state-of-the-art screens have been introduced, allowing for more than 40 additional virtual cycling classes to be hosted every week across three studios. Combined with the increased capacity of the existing studio, these changes will lead to better access to a wider range of classes, with less time spent on waiting lists!

The gym changing rooms at Watford Woodside are also getting a makeover. Cue modern fittings, plus a bigger space, making it much more pleasurable for everyone.

## What's changing at Watford Central Leisure Centre?

Similarly, customers at Central will also benefit from new virtual cycling equipment in the group exercise studios. Again, this has allowed the centre to host a variety of new classes and cater for the growing demand for group fitness.

## What's still to come?

The second phase of improvement works is beginning shortly and is set to bring even more exciting changes to both centres.

The fitness suite at Watford Woodside is being extended to offer an additional 20 top-of-the-range

TechnoGym stations. All of the equipment is being updated and a larger space for free weights and functional training will be created.

The toning suite will also be more than double in size and offer a wealth of new equipment for people of all ages and abilities to use.

Two squash courts will also be given an overhaul, with the installation of new lighting and reconditioned playing surfaces.

Watford Central's fitness suite will be extended and new kit will be put in. With the introduction of a sauna and steam room on poolside in the New Year, customers will have access to exciting new and enhanced facilities.

## Things to be aware of

The development at both centres is being carried out in phases to minimise disruption to customers. While work to renovate the fitness suites at both centres takes place, there may be small interferences to services and reduced access to certain areas of the sites.

Everyone Active will keep members informed about any disruptions through notices in the centres and social media updates. You can also keep up to date with the development by visiting [everyoneactive.com/watfordrefurbs](http://everyoneactive.com/watfordrefurbs)



Elected Mayor Peter Taylor and SLM Regional Contract Manager Ian Cook

# 100 years of Remembrance

**We're hosting events, exhibitions and workshops throughout the town over the coming months to remember the First World War.**



## Beacon of Light

Led by Elected Mayor Peter Taylor, Watford Museum will be joining organisations and communities around the country in a historic lighting ceremony. The ceremony will take place in the Museum garden on Sunday 11 November (Remembrance Sunday) at 7pm.

## Roll of Honour

The Watford Borough Roll of Honour is a hand written book thought to be designed by Watford School of Art to remember 830 servicemen who fought and died in the First World War. There are over 500 other servicemen who played an important role in the war who do not feature in the book.

Funded by the Heritage Lottery Fund (HLF), it was digitalised by Watford Museum in 2014. Search the database by visiting [watfordwillremember.co.uk](http://watfordwillremember.co.uk)

## War Memorials

There are a number of memorials in Watford that you may not know exist. This includes the Grade II\* listed Peace Memorial outside the Town Hall and the Grade II listed St Matthew's Church Memorial in Oxhey. For photographs or more information, visit [watfordwillremember.co.uk](http://watfordwillremember.co.uk)

## Watford Museum

**Saturday 3 November - Walter Harvey Hallam - An ordinary man**  
Visit the Museum at 2pm and watch two actors (in authentic WWI costumes), portray the story of Walter Harvey Hallam. Walter was a soldier who served on the first day of the Battle of the Somme. No booking is necessary so please just turn up.

**1 November to 22 December - The Great War - Watford 1918**  
An exhibition will be held in the Museum's foyer commemorating the 100 year anniversary of the First World War.

**Sunday 11 November - Remembrance Sunday services**  
There will be a number of services taking place throughout Watford, including the Civic Service of Remembrance, which takes place every year.

It will be led by the Elected Mayor of Watford Peter Taylor and Chairman Rabi Martins outside the Town Hall at 3pm. Please keep an eye on the website for details of this and other services, which will be announced shortly: [watfordwillremember.co.uk](http://watfordwillremember.co.uk)



# Watford celebrates another record breaking year for its parks

**Watford's green spaces have been granted more Green Flag awards than any other district in Hertfordshire for the third year running.**

**Once again, Watford Borough Council and Veolia have broken the record, with 12 parks and open spaces in Watford now recognised by the Green Flag Award Scheme as some of the very best in the country - that's one more than last year!**

The 2018 Green Flag status parks in Watford are: Cassiobury Park, Woodside Playing Fields, Cheslyn House and Gardens, Waterfields Recreation Ground, Callowland Recreation Ground, North Watford Playing Fields, Oxhey Park, St Mary's Churchyard, Goodwood

Recreation Ground, Paddock Road Allotments, North Watford Cemetery, and for the first time - Harwoods Recreation Ground.

Elected Mayor of Watford Peter Taylor said: "This is excellent news for everyone who lives, works and visits Watford. North Watford Playing Fields (Orchard Park) scored especially highly this year as did Waterfields Recreation Ground, Oxhey Park and Cassiobury Park.

"We are delighted to have set a new Green Flags record of 12 for Watford, which is the highest in

Hertfordshire. This adds to the Horticulture Week Custodian Award that Cassiobury Park recently picked up for Best Park Restoration Project. For many years we have invested in Watford's parks and green spaces so that everyone is able to enjoy them."

This huge success has been achieved thanks to a strong partnership between Watford Borough Council and Veolia. In 2017 the two organisations were given the Horticulture Week Custodian Award Best Parks Partnership - Commercial 2017 award.



# Watford's town centre CCTV: keeping you safe

**Whether you are working, shopping or socialising in the town centre, Watford's CCTV operators are helping to keep you and our town safe.**

**Based in our town centre control room at Watford Police Station, camera operators monitor nearly 90 cameras and can display live images across 15 screens. Footage is recorded digitally and is held for up to 31 days before it is overwritten. The operators also have radios so they can communicate with shops, bars, parking attendants and Police on patrol. They can even transmit live images to the Police control room at Welwyn or to the matchday control room at Vicarage Road Stadium.**

This state-of-the-art technology enables the Police to deploy resources more effectively to incidents and, if necessary, directly to the CCTV control room. It also enables them to have timely and meaningful briefings and information exchanges on current and emerging crime trends. The cameras also monitor traffic and provide live updates for the highways authority and radio traffic information providers.

The CCTV room operates 24 hours a day, 365 days a year and is staffed by an experienced and qualified operator at all times. This proactive approach is achieved by operators noting observations in an occurrence log. Records range from alarm activations and assaults



to criminal damage, nuisance behaviour, missing persons, fraud and theft. Plus reports on trends, operator activity and incident statistics are produced monthly.

Peter Taylor, Elected Mayor of Watford (pictured), recently visited the impressive control room. He said: "It is really important that Watford is as safe as possible for residents and visitors, no matter where or when they visit. Having this control room within Watford Police Station means that we can provide a faster, more efficient and joined up service. That is good news for all of us."

For more information, visit [watford.gov.uk/CCTV](http://watford.gov.uk/CCTV) or look at the

locations of all our cameras on our interactive map "Explore Watford" at [watford.gov.uk/explore](http://watford.gov.uk/explore).

## Did you know...

**From April 2017 to March 2018 our CCTV operator's proactive approach assisted with the arrest of more than 500 people, predominantly for public disorder or nuisance behaviour. Watford's CCTV service recently led the Police and the National Crime Agency to the arrest of one of Europe's most wanted men.**

# Old meets new as Pope's Yard Brewery comes home to Watford

**As part of a major regeneration scheme on the St Albans Road, the original Victorian station house is being restored to become a tap room for one of the town's last remaining breweries.**



**In June, the council gave the green light to an exciting scheme put forward by forward-thinking developer GS8. It will see an unattractive industrial area of the St Albans Road transformed into a community hub. Most of the homes will be two and three-bed apartments designed for families. And, despite the amount of work there will be to decontaminate the old industrial land, 22% of the development is earmarked for affordable housing.**

But there is something extra special about this development, too. Bang in the middle of this run-down industrial estate sits one of the town's historical gems – the Grade II listed Old Station House. The 1837 building was the waiting room and ticket office for the original train station and saw the likes of Queen Victoria, Prince Albert and Queen Adelaide pass through its doors.

Used as an office and a storage facility, the building needs a lot of love to get it back to its best.

Recognising the importance and the potential of the building, GS8 worked with the council's Watford Museum team to look at potential uses for it. The aim was to draw out its history while reigniting its social relevance. We wanted to see people pass through its doors, spend time there and bring the building to life, just like in Victorian times.

Enter Pope's Yard Brewery. This remarkably successful Watford brewer seemed an obvious choice. After all, Watford is traditionally a brewing town and our very own Museum is run from the old Benskins Brewery.

Having recently moved its operations to nearby Apsley, Hemel Hempstead, Pope's Yard jumped at the chance to open the doors of its first tap room in its hometown of Watford. The owners of the brewery, Geoff Latham and Barbara Leenen, are now working closely with GS8, Historic England and Watford Museum to make this dream a reality.

Geoff said: "I was born and raised in Watford and it's been my lifelong ambition to bring brewing back to the town. We love the idea of being able to preserve the town's heritage whilst also creating a place for people to come together."

The vision is for the Old Station House to become a bottle shop and tap room for Pope's Yard and other local and craft breweries. Barbara and Geoff also want to see the station house history at the heart of the refurbished building, through a permanent exhibition. Alongside that, the brewing enthusiasts want to educate people about the town's rich brewing history.

Elected Mayor of Watford Peter Taylor said: "This story is a wonderful example of how new development can work in harmony



with the town's heritage. This will provide something completely new and exciting for residents and I think it is really fitting that the building will come back into use as a social hub."

Ben Spencer from GS8 added: "We

are excited to be bringing Pope's Yard Brewery back to Watford and feel the refurbishment of the listed Old Station House building into an artisan tap room and community-led events space will be an extremely positive addition to the local area."



# Watford championing mental health support

**The Chairman of Watford Borough Council, Cllr Rabi Martins, is the council's mental health champion, as well as representing Central Ward.**

**To coincide with his theme for the year, which is mental health, wellbeing and inclusiveness, he has chosen the Guideposts Trust and Signpost as his two Chairman's charities and will spend his year in office - which began on Wednesday 23 May - fundraising for them.**

Both good causes help people in the Watford area to improve their mental health through a range of different support services. The Guideposts Trust helps people affected by the challenges of caring, aging, learning disabilities and mental health. Signpost provides counselling, coaching and other support for young people in South West Hertfordshire.

Cllr Martins highlighted: "Support has to come from not just the health service but the community

at large too - work colleagues, family, friends and, of course, specialist support groups such as Guideposts, Signpost, MIND and a host of other volunteer groups. This will make it a little easier for people to talk about and look after their mental health, with the support they need."

The Chairman hopes that by opting to devote his year in office to working with such groups, it will encourage more open dialogue about the issue, as it is generally accepted that one in four people in the UK live with some form of mental health related issue.

## Signpost

Signpost is a local charity which has supported the health and education of young people in South West Herts since 1973. It provides over 5,000 sessions of

counselling and coaching to nearly 500 young people a year, as well as running art and social groups. It is based in Watford but also works out of Hemel Hempstead, Borehamwood, Berkhamsted, South Oxhey, Rickmansworth and Tring. [signpostcounselling.co.uk](http://signpostcounselling.co.uk)

Shirena Counter, CEO, said: "Our vision and aim is to empower young people to embrace their uniqueness, find their voice and forge their future. We help young people coping with problems, ranging from family break-up to being victims of bullying to overcome the effects of abuse to get their lives back on track."

## Guideposts

Guideposts is a mental health support charity in Hertfordshire that supports up to 200 people facing the challenges of mental health issues, learning disabilities, caring and ageing. It works with clients in groups and on a one-to-one basis. They are based at Henry Smith House in Watford and have outreach locations in Borehamwood, Rickmansworth and Garston. It also has clients on a befriending scheme and support carers looking after people with mental health problems. See [guideposts.org.uk](http://guideposts.org.uk)



Denise Smith, Mental Health Support Worker at Guideposts and Cllr Rabi Martins

*Your guide to*



*Winter in*  
**WATFORD**

*Santa Claus, Skating, Panto,  
Shopping and more...*

**winterinwatford.com**



**WATFORD  
COLOSSEUM**



**110  
years**  
1802-2012



# Jack & the Beanstalk

Watford Palace Theatre  
Wed 5 December – Sat 5 January



# JACK AND THE Beanstalk

**Watford  
Palace Theatre**

**110**  
years  
1808-2018

**For 2018 join Jack, Dame Trott and their beloved cow Moomoo on the most giant adventure of all!**

The ultimate seasonal treat for you, your family and friends, created especially for you in Watford by the theatre's devoted team.

A lavish spectacle with live musicians on stage, stunning sets and costumes, song, dance and

slapstick, performed straight from the heart by a talented company of new faces and Palace favourites.

**For tickets:**  
**[watfordpalacetheatre.co.uk](http://watfordpalacetheatre.co.uk)**  
**01923 225671**

## Big Skate

The Parade by The Pond  
Sat 24 November - Sun 13 January



**WATFORD  
BOROUGH  
COUNCIL**

**Made with real ice, the outdoor skating rink will be returning to The Parade for the festive season!**

Featuring a viewing area and bar and serving festive drinks for all ages, it's part of Watford Borough Council's Big Events series.

**For tickets:**  
**[watfordbigevents.co.uk](http://watfordbigevents.co.uk)**



Find out what else is on at: **[winterinwatford.com](http://winterinwatford.com)**



# *Santa Claus & the Magical Christmas Journey*

Watford Colosseum  
**Sat 1 – Mon 24 December**

**A Christmas adventure with songs, stories, a meet  
and great with Santa and a free gift!**

From the producers of last year's record breaking  
production, the next adventure in the collection  
is filled with songs, nursery rhymes and magic.  
It promises to be the Christmas treat you won't  
want to miss.

Recommended for children  
aged 2 - 7 years, but all  
children welcome.

**For tickets:**  
**[watfordcolosseum.co.uk](http://watfordcolosseum.co.uk)**  
**01923 571102**

**WATFORD  
COLOSSEUM**

## *Christmas is coming*

**intu**  
Watford

This year, intu Watford have got a whole host of activities  
and competitions for kids and big kids alike, as well  
as free parking after 6pm on weekdays and longer  
opening hours. Plus, with all the biggest brands and  
all your favourite stores, we're here to help you  
find every gift, however impossible.

**Christmas Light Switch On**  
**Thu 15 November**

**Santa's Magical Grotto**  
**Fri 23 November – Mon 24 December**

**Free Parking after 6pm on weekdays &  
Late Night Opening**  
**Mon 3 December – Fri 21 December**

**For more information visit:**  
**[intu.co.uk/watford](http://intu.co.uk/watford)**



# Calendar dates

15 November

**Light Switch On**  
intu Watford

23 November – 24 December

**Santa's Magical Grotto**  
intu Watford

24 November – 12 January

**Big Skate**  
The Parade by The Pond

1 December – 24 December

**Santa Claus & the Magical Journey**  
Watford Colosseum

3 December – 21 December

**Free Parking after 6pm on weekdays & Late Night Opening**  
intu Watford

5 December – 5 January

**Jack & the Beanstalk**  
Watford Palace Theatre

17 December

**The Snowman – screening with live orchestra**  
Watford Colosseum

22 December – 23 December

**Ballet Theatre UK presents The Sleeping Beauty**  
Watford Colosseum



For more events, news and offers this winter, visit:

**winterinwatford.com**

Follow us and share your photos using **#WinterInWatford**

# Watford Workshop no ordinary workplace

**Watford Workshop is no ordinary workplace. The majority of their employees are adults with learning and/or physical difficulties, including those who have become disabled through an accident or illness.**

**It has provided hand packing outsource solutions to customers across the UK and even worldwide for over 55 years. Watford Workshop's projects vary from retail reworks, promotional packing, electrical assembly, to simple packing or direct mail.**

It works closely with its customers to ensure deadlines are met and provides a seasonal/overflow service. This is essential, as many of its customers' products are destined for Tesco, Boots, Superdrug, Asda, Sainsbury's and Morrisons, to name but a few. For other customers, Watford Workshop gives them a commercially viable option to enter niche or test markets.

In a highly competitive world, Watford Workshop's longevity and high level of repeat custom is testament to its reliability and professionalism.

## **So how can a charity also be a commercial business?**

Watford Workshop is passionate about providing people with meaningful, genuine work by obtaining contracts which have



*Elected Mayor Peter Taylor  
at Watford Workshop*

to be won by being commercially competitive. Due to the nature of the disabilities of those working in the workshop, it may take two, three or even four people to deliver the level of output of one employee. This is where the charity supports these workplaces for the adults who so desperately need them.

The charity funds work training and a variety of life and independent living skills training. This covers literacy, numeracy, hygiene, cooking, cleaning and laundry, with many others available. This training alone costs £360 per person, per course.

Watford Workshop believes that its measure of success is the impact it has on its employees' lives. It gives adults with disabilities an opportunity to work, gain independence, confidence, dignity

and respect - all the things that abled bodied adults often take for granted.

Tom, a member of staff at the workshop said: "I have been here 33 years and it's the friendliest, nicest place to work. I was retired but I came back due to the socialisation and support. It has helped my confidence."

For Watford Workshop to continue to provide opportunities, they require much needed work contracts, donations (monetary or in kind), fundraising and volunteers.

If you think you could help the Workshop in any way or are interested in working with them, please contact 01923 220 256 or visit [watfordworkshop.co.uk/contact](http://watfordworkshop.co.uk/contact) and [mydonate.bt.com/charities/watfordworkshop](http://mydonate.bt.com/charities/watfordworkshop)

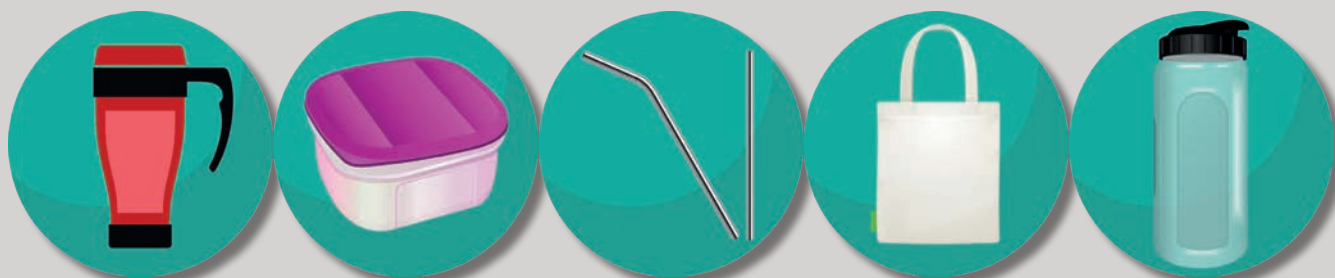
# Breaking the single use plastic cycle

You may have already heard about the damaging effect of plastics, thanks to programmes like Blue Planet highlighting the devastating impact the man-made material is having on our environment and marine life in particular.

**The introduction of the 5p fee on carrier bags has seen an incredible 9 billion fewer plastic bags used by shoppers - that's an 83% fall in bag use by the UK's seven biggest retailers since 2014\*.**

*\*Source: DEFRA/WRAP*

Watford Borough Council is encouraging residents to go one step further and make small changes in plastic usage that will have a huge impact. Here are some simple swaps that you can make in your daily life to reduce plastic usage:



## Remember the scrunch test when recycling

When you're recycling plastics always remember the scrunch test - if the item bounces back when you scrunch it, it cannot be recycled, so make sure it goes into your black bin. Unfortunately items such as polystyrene, carrier bags and plastic wrapping like crisp packets, cling film, chocolate bar wrappers and salad bags cannot be recycled in your blue-lidded bin. Find out what can go in your recycling bin at: [watford.gov.uk/blueliddedbin](http://watford.gov.uk/blueliddedbin)

## Bin collections and reporting missed bin collections

Ensure that your bins are put outside your property by 6am on your collection day and they are returned to your property boundary within 24 hours of being emptied.

If you notice that your bin hasn't been emptied, check whether a card hanger has been left on your bin explaining the reason, such as wrong items in the bin, bin too heavy etc. If no hanger has been

left, you can report an accidental missed bin collection, which should be done within 24 hours to Veolia by emailing [enquiries.watford@veolia.co.uk](mailto:enquiries.watford@veolia.co.uk) or calling **020 3567 6900**.

Check your collection day or report a missed bin at [watford.gov.uk/mybinday](http://watford.gov.uk/mybinday)



## Recycling Fund for Communities

Do you have a great idea for a community project? Boost your green project with up to £2,000 from Veolia!

If your project inspires people to do the right thing with their waste by making use of recycled or reused materials, or if it will help protect the local environment, Veolia want to hear from you.

Find out more at [watford.gov.uk/recyclingfund](http://watford.gov.uk/recyclingfund)

## Additional green bins for garden waste

Did you know that you can have more than one green bin for your garden waste? All households in Watford are entitled to one green bin collected without charge for their standard collections of combined garden and food waste. If you would like additional bins for garden waste, you can order up to six bins at a charge of £35 per bin for the period (running from 1 August 2018 to 31 July 2019).\*

Once you have paid and displayed your yellow stickers on your additional green bins, our partner, Veolia, will collect your additional garden waste bins at the same time as your first green bin.

For more information and to sign up for additional green bins visit [watford.gov.uk/additionalgreenbins](http://watford.gov.uk/additionalgreenbins)

*\*Please note: 1 August to 31 January is charged at £35 and the period runs until 31 July. 1 February to 31 May is charged at £17.50 and the period runs until 31 July.*

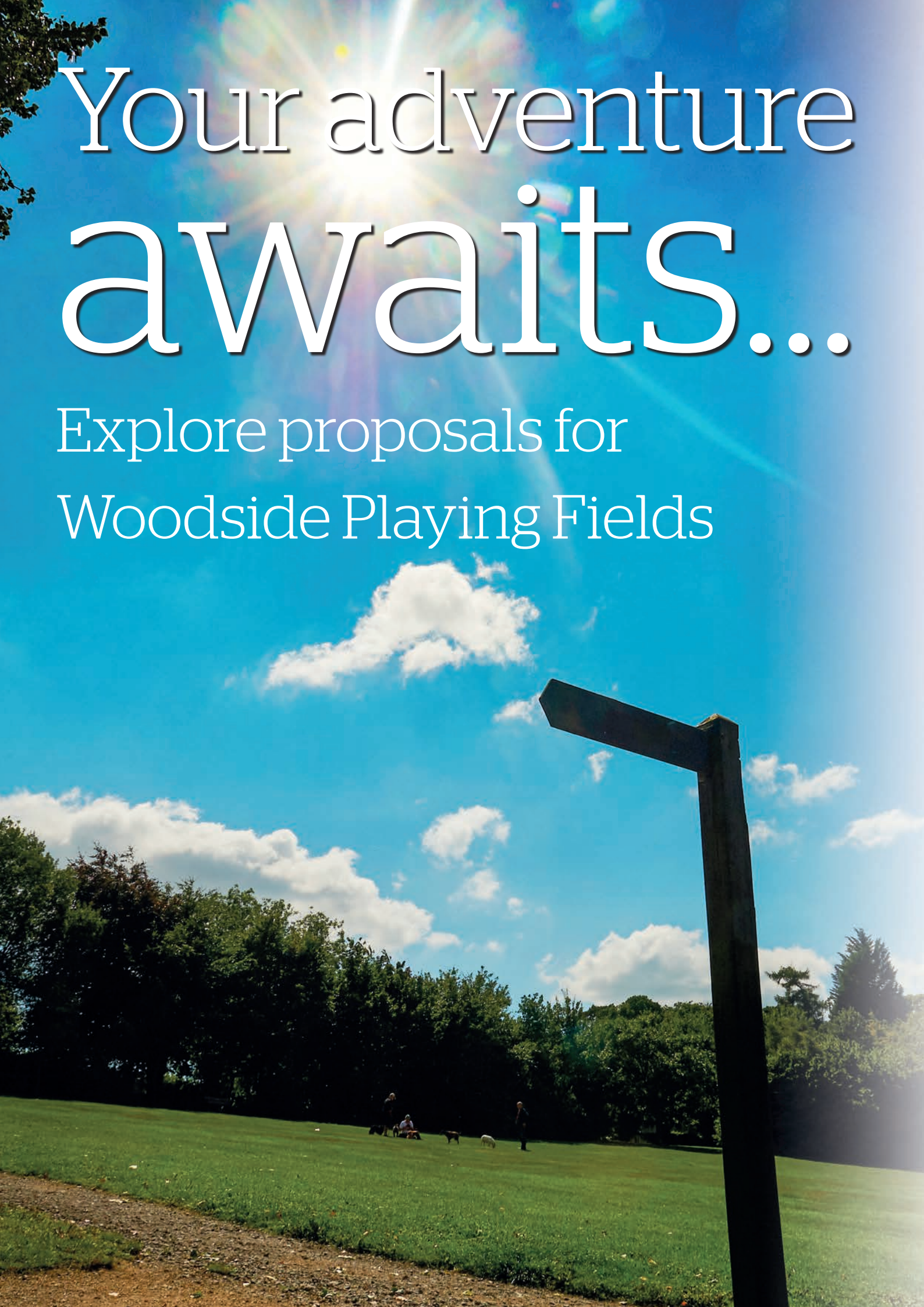
## How to report flytipping

Did you know that putting bags of rubbish and other items such as TVs and mattresses next to litter bins is flytipping? Not only does flytipping make our town look untidy and attract more rubbish, it is illegal. Help us keep your street clean and tidy:

- use your weekly bin collections for rubbish and recycling
- book a bulky collection for larger items, such as mattresses and fridges, by contacting Veolia at [enquiries.watford@veolia.co.uk](mailto:enquiries.watford@veolia.co.uk) or call **020 3567 6900**
- donate items in good condition to charity - some offer free collections
- make use of your local Household Waste Recycling Centre
- take responsibility for your rubbish! If you don't you could get a £300 fixed penalty notice
- if you see flytipping in action call the police on 999. If it has been left please report it to Veolia Watford at [enquiries.watford@veolia.co.uk](mailto:enquiries.watford@veolia.co.uk) or call **020 3567 6900**

Find out more at [watford.gov.uk/flytipping](http://watford.gov.uk/flytipping)





# Your adventure awaits...

Explore proposals for  
Woodside Playing Fields

## Proposals to give Woodside Playing Fields a magical makeover have moved a step closer, after a consultation for the park took place in September.

**The plans include a whole range of dizzying new facilities! A high ropes course, an outdoor activity centre and an adventure golf course are just some of the modern facilities recommended for the site.**

The range of developments planned is designed to improve the sports facilities on site, promote an active lifestyle and encourage greater use of the park by residents and visitors – by putting in place the fun and fantastic facilities that you want! These developments include a new community sports hub and providing cricket, football and boxing facilities for the clubs already based at the site.

It gets better! Along with the adventure golf and high ropes course, we're looking at turning the indoor bowls club into a multi-use activity centre. Think martial arts, gymnastics, ballet and dance studios, exercise classes and more! It's a huge space which could be used by thousands of people of all different ages and abilities.

Other attractions that could also be coming include a new park café, improved play areas and public toilets.

Peter Taylor, Elected Mayor of Watford, said: "We have worked hard to ensure that Watford has



first class leisure facilities. One of my key manifesto commitments was to help bring a brand new facility for all ages and abilities to Woodside Playing Fields. These plans are ambitious and will give residents more excellent state-of-the-art facilities. I can't wait to see these improvements take shape."



### When will Woodside be transformed?

**The masterplan and consultation report will be reviewed again by the council's Cabinet in November. Subject to approval, a more detailed business case would be presented to a full Council meeting in early 2019. Next would come a planning application, followed by the appointment of a build contractor and an estimated 12 month build project. Completion of the project would likely be towards the end of 2021.**

# Creative talent on show at Watford's first Short Film Festival

**Earlier this year, filmmakers from across the world submitted their entries to the first ever Watford Short Film Festival. Over the summer, the winners were presented with awards at the Watford Pump House.**

**The event, which was funded through Watford Borough Council's Small Grants Fund and supported by the council, gave former West Herts College student James Dyer the chance to bring his ambitions to life. Now studying film at university, James wanted to see his hometown put on the map by hosting a competition for budding filmmakers.**

James said: "We are amazed by not only the quantity of the films we received this year, but the quality from filmmakers locally, nationally and internationally. Huge thanks go to our festival

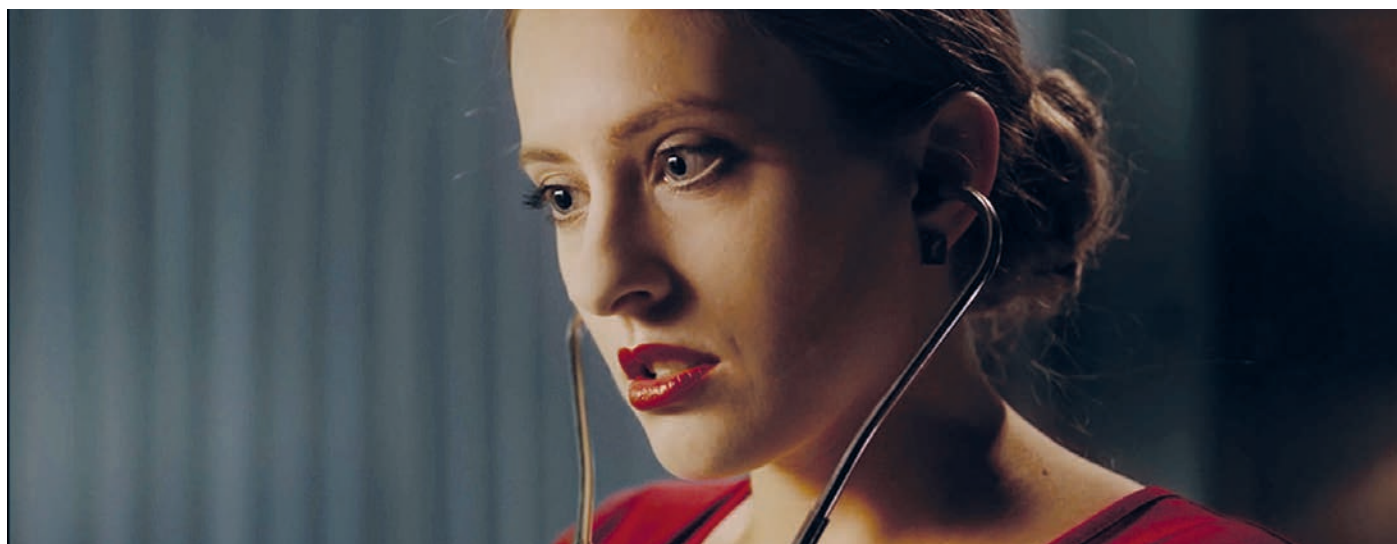
attendees, sponsors and the staff at Watford Museum and the Pump House Theatre for hosting our event. We hope to return soon and share even more fantastic films."

204 films from 33 countries were submitted in just three months. Award winners were from the UK (including Watford), Turkey, Australia, Canada and the US and the categories were Best Drama, Best Documentary, Best Animation and the Watford Award.

One of the award winners, Radheya Jegatheva who directed iRony, told us: "I'm glad this film had a connection with the

audience, as it explores the impact of social media on the current generation, especially our youth. I wish I could have been there - I'm a student at Curtin University in Australia and so wasn't able to attend. But a huge thank you to everyone involved in the Watford Film Festival for making this possible and giving me this opportunity to participate. I'm glad you enjoyed my film and it's an honour to have been part of this event."

Find out more about the Short Film Festival at [facebook.com/WatfordShortFilmFestival](https://facebook.com/WatfordShortFilmFestival)



Shattered

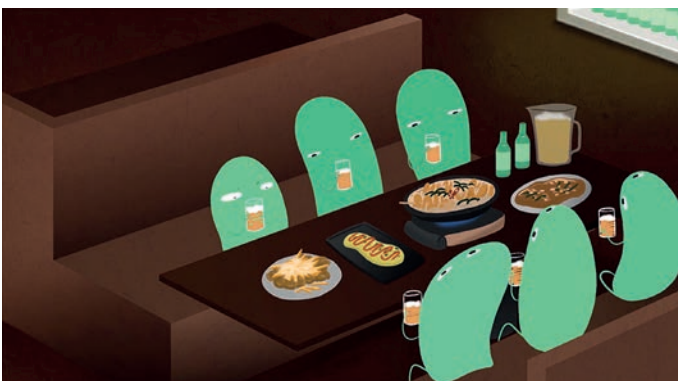
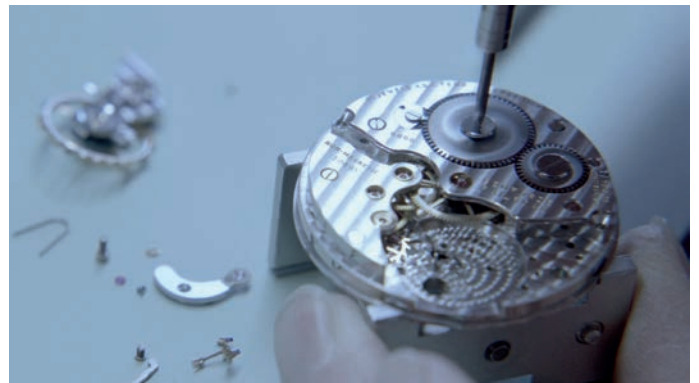


## The winners

- Watford Award: Living With Parkinson's Disease
- Best Drama: A Ferry Tale
- Best Drama (College/University): Shattered
- Best Documentary: The Bench and A Passing Time
- Best Animation: A Drawing and iRony
- Best Animation (College/University): Where I Was Born

**“ I laughed, I cried, I was taken from cradle to grave, to outer space and back again, all for free. ”**

*Festival-goer and film-lover*



# Are your details on the electoral register up to date?

**A big thank you if you have already responded! We need to make sure that every household replies as soon as possible so that you can vote at election time and have your say.**

All households that have not yet responded to this year's canvass will have been sent a Household Enquiry Form. This form lists everyone currently on the electoral role at each address. Please carefully check the details included on the form and let us know without delay:

- **if all the details are correct**  
(confirm no change required)
- **any changes that are needed**  
(add, delete or amend names).

The easiest way to make any changes is online - simply follow the 'CHANGES required' section on the form. Alternatively, please sign, date and post your amended form to us as soon as possible.

If all the details are correct, please confirm your registration online, or by text, phone (Freephone number) or post - follow the 'NO CHANGES needed' section on the form.



You are not automatically registered if you pay council tax or if you have previously been registered. If you have moved home in the last 12 months you are also less likely to be registered, so look out for the form.

Follow the instructions on the form carefully. If you have more questions you can contact the elections team at [elections@watford.gov.uk](mailto:elections@watford.gov.uk) or on 01923 278369.

Respond as quickly as you can, and ideally online or by text, as this will help keep down the cost of printing reminders and sending canvassers to visit households who have not responded.

**Please note: it is a legal obligation to provide the information requested by the Electoral Registration Officer at the annual canvass.**

**In May 2019, you will be able to vote for a Ward Councillor in your area, and any other local or national election/referendum called, but only if you are registered to vote!**

# Discover how your spare change can change lives

Working with local homelessness charity New Hope, Watford Borough Council has been talking about how donations to homelessness charities can change lives. In two short films, we show why donating directly to local charities rather than to people on the street can have a bigger impact. You can watch the two films at [watford.gov.uk/sparechange](http://watford.gov.uk/sparechange).



**Elected Mayor of Watford Peter Taylor said: “Watford is a town for everyone and this project really shows that. We all want to live in a town where there are no rough sleepers and people have homes. The council has launched this initiative to encourage people to donate money directly to one of Watford’s local charities, such as New Hope. We work very closely with New Hope, funding their outreach services. Working together we can help to turn lives around so that people are able to move into permanent accommodation.”**

The films, which have been developed with the expert knowledge of New Hope, show

how donations to this charity and others can fundamentally change lives for the long-term, giving people a future. To be sensitive to vulnerable people going through homelessness, an actress is used in the films and her account is inspired by many real-life stories of people recently helped by New Hope.

## Funding

The funding for these films came from the Police and Crime Commissioner’s Hertfordshire Community Fund, which finances projects to support community funding. The films are supported by Safer Watford, chaired by Watford Borough Council and bringing

together key partners – such as the police, the fire service and Hertfordshire County Council – to take a strategic and holistic view of all community safety matters.

Keep an eye on the council’s website and social media for updates on the campaign over the next few months.

## SWEP

During very cold weather, the Severe Weather Emergency Protocol (SWEP) comes into effect. Funded by Watford Borough Council, SWEP allows New Hope to provide additional emergency beds and shelter during severe weather for people who are sleeping rough in Watford. If you are rough sleeping, or are concerned about someone who is, call New Hope’s 24/7 emergency line on **0300 012 0168**.



**Watch these powerful films and find out more about the work taking place in the town at [watford.gov.uk/sparechange](http://watford.gov.uk/sparechange)**



# What's on

## in and around Watford

### OCTOBER

#### Much Ado About Nothing

4 - 27 October - Tickets from £15.50

Watford Palace Theatre

Shakespeare's sparkling comedy of misunderstandings, given a 1940s twist! [watfordpalacetheatre.co.uk](http://watfordpalacetheatre.co.uk)

#### Watford Fringe

6 - 7 October, 2 - 8pm - Tickets from £2 - £10, some events are free.

Pump House Theatre and Arts Centre

Watford Fringe returns for a two day festival of the best of existing and emerging talent in Watford.

See [watfringe.com](http://watfringe.com) or contact

[sharon.gaffney@pumphouse.info](mailto:sharon.gaffney@pumphouse.info)

#### Watford Colosseum Family Fun Open Day

7 October, 12 - 4pm - FREE ENTRY

Watford Colosseum

Explore behind the scenes of your local entertainment venue with backstage tours, sound, lighting and pyrotechnic displays, children's arts and crafts, live music and more.

[watfordcolosseum.co.uk](http://watfordcolosseum.co.uk)

#### The Elvis World Tour with Shawn Klush and Dean Z

11 October, 7.30pm - Tickets from £29.50

Watford Colosseum

Direct from the USA - the world's most successful Elvis tribute artiste of all time, Shawn Klush, and the incredible Dean Z, also Grand Champion of The Ultimate Elvis Tribute Contest. See [watfordcolosseum.co.uk](http://watfordcolosseum.co.uk)

#### Children of the Windrush: 70 years since

14 October, 5pm - Tickets £8

Watford Palace Theatre

We invite everyone to join us to reflect on the 70th anniversary of this significant historical event, and celebrate the richness of Black British culture today. Book online: [watfordpalacetheatre.co.uk](http://watfordpalacetheatre.co.uk)

#### Sunday With The Stars | Tom Jones

14 October, doors open at 12.30pm - Tickets:

£32.00 including three-course Sunday lunch

Watford Colosseum

Enjoy a deliciously prepared three-course Sunday roast whilst being entertained by the UK's top tribute artists. See [watfordcolosseum.co.uk](http://watfordcolosseum.co.uk)

#### Mayerling

18 October, 1.30pm - Tickets £15.50

Watford Palace Theatre

Mayerling is a classic of the Royal Ballet repertory, with its emotional depth, haunting imagery, and one of the most demanding roles ever created for a male dancer. Delayed live performance from the Royal Ballet Book online at [watfordpalacetheatre.co.uk](http://watfordpalacetheatre.co.uk)

#### The Purcell School Symphony Orchestra

21 October, 3pm - Tickets: £9.50, £13.50

Watford Colosseum

The Purcell School Symphony Orchestra perform Ravel's magical suite of pieces inspired by the Mother Goose tales, Wieniawski's second violin concerto, one of the greatest of the Romantic era. See [watfordcolosseum.co.uk](http://watfordcolosseum.co.uk)

#### King Lear

21 October, 2pm - Tickets £15.50

Watford Palace Theatre

Jonathan Munby directs this 'nuanced and powerful' (The Times) contemporary retelling of Shakespeare's tender, violent, moving and shocking play. Delayed live from London's West End. See [watfordpalacetheatre.co.uk](http://watfordpalacetheatre.co.uk)

#### Belmont Theatre Company presents: Journey's End

24 - 27 October - Ticket £13 concessions available

Pump House Theatre and Arts Centre

This play commemorates the centenary of the end of the War, highlighting the sacrifices and experiences of men thrown together in battle. See [belmonththeatre.co.uk](http://belmonththeatre.co.uk)

#### Flawless presents Chase The Dream, The Reboot

25 October, 7pm - Tickets £29

Watford Colosseum

Following their world-tour, Flawless are back in the UK performing even bigger and more jaw-dropping routines than ever before! See [watfordcolosseum.co.uk](http://watfordcolosseum.co.uk)

#### Russell Watson - Canzoni d' Amore

26 October, 7.30pm - Tickets £49, £44, £39

Watford Colosseum

Having sold more than 7million albums worldwide, Russell Watson is firmly established as the UK's best-selling classical crossover artist of all time. See [watfordcolosseum.co.uk](http://watfordcolosseum.co.uk)

#### Gag House Comedy Superstars: Lee Nelson, Rhys James, Jonny Awsum and Mark Dolan as MC

27 October, 8pm - Tickets £22.50

Watford Colosseum

Gag House Comedy Superstars is making its debut in Watford, with acts that will be familiar to you from shows such as Live at the Apollo, Mock the Week, Britains Got Talent and lots more. See [watfordcolosseum.co.uk](http://watfordcolosseum.co.uk)

#### Halloween Scream-ings 2018: Hocus Pocus 1993 (PG), A Nightmare on Elm Street 1984 (18), The Shining 1980 (18)

28 October, from 3.30pm - Tickets: £5 per person per screening.

Watford Colosseum

Meals, food and snacks will be available for purchase in the cafe bar. See [watfordcolosseum.co.uk](http://watfordcolosseum.co.uk)

#### Crafty History - stained glass designs

30 October, 10.30 - 11.30am - Cost £1 per child

Cassiobury Hub education space

Join in a craft activity to make stained glass designs, based on the ones that use to be at Cassiobury House. Children must be accompanied by an adult. First come, first served basis. No need to book, just turn up!

#### Halloween at Cassiobury Park - Ghostly stories

31 October, 1 - 4pm - £2 per person

Cassiobury Hub

Come and join the spooky storytelling in the nearby woods and some Halloween themed crafts. Frightening fancy dress is encouraged! Booking required by emailing [cassiobury@watford.gov.uk](mailto:cassiobury@watford.gov.uk)

### NOVEMBER

#### Storytime adventure

1 November, 10.30 - 11.30am - Cost £1 per child

Cassiobury Hub

Come and listen to a story and then take part in fun activities in the park. Children must be accompanied by an adult. First come, first served basis, suitable for 2-5 years. No need to book, just turn up!

#### The Witches

2 - 4 November, times vary - Tickets £10

(£5 under 5s)

Watford Palace Theatre

Take a seat as Boy and his Norwegian grandmother take you on an unforgettable journey through Roald Dahl's magical fiendish fantasy. See [watfordpalacetheatre.co.uk](http://watfordpalacetheatre.co.uk)

#### Cassiobury Fireworks

3 November, 6 - 8.30pm - FREE

Cassiobury Park

A fabulous night of fireworks and fun! Live performances on stage, a huge bonfire, funfair rides topped off with a magnificent fireworks display. Although the event is free we do ask to give generously to the collectors in the park collecting on behalf of local charities. See [watfordbigevents.co.uk/fireworks](http://watfordbigevents.co.uk/fireworks)

#### The Magic of Motown

3 November, 8pm - Tickets £26, £28.50, £29.50

Watford Colosseum

Music fans are invited to the biggest party of the year as the unstoppable Magic of Motown show steams into town! See [watfordcolosseum.co.uk](http://watfordcolosseum.co.uk)

#### Brendan Cole: All Night Long

6 November, 7.30pm - Tickets £42, £37.50, £32.50,

£27.50, Groups 8+ 10% off, Groups 20+ 20% off

Watford Colosseum

Strictly Come Dancing's charismatic Brendan Cole takes to the stage to wow audiences with his latest spectacular production, All Night Long. This is no ordinary dance show! See [watfordcolosseum.co.uk](http://watfordcolosseum.co.uk)

#### Only Fools and Three Courses

7 November, 7.30pm - Tickets £40 including three-course meal

Watford Colosseum

Join us for the dinner event of the year, combining fine food and comedy action Only Fools and Horses style. See [watfordcolosseum.co.uk](http://watfordcolosseum.co.uk)

#### Funny Women Comedy Night

9 November, 8pm - Tickets £16, age suitability 16+

Watford Palace Theatre

Watford Palace Theatre is delighted to join forces with Funny Women to curate a showcase of the best female comedy talent in the UK today. See [watfordpalacetheatre.co.uk](http://watfordpalacetheatre.co.uk)

#### Shakuntala

10 November, 7pm - Tickets £8

Watford Palace Theatre

Subrang Arts returns to the Palace with a brand-new adaptation of Kalidas' classic Indian poem Shakuntala. See [watfordpalacetheatre.co.uk](http://watfordpalacetheatre.co.uk)

**Watford Philharmonic Society: The Armed Man**  
10 November, 7.30pm - Tickets £20, £22

Watford Colosseum

On the eve of the 100th Anniversary of the end of the Great War, the Watford Philharmonic Society and Chiltern Choir, mark this momentous occasion. See [watfordcolosseum.co.uk](http://watfordcolosseum.co.uk)

**Guys & Dolls**

13 - 17 November, times vary - Tickets from £15

Watford Palace Theatre

Cassio Productions presents: One of the funniest musicals of the Broadway golden age, this timeless musical bursts into life on stage with unforgettable songs including "Luck Be a Lady". See [watfordpalacetheatre.co.uk](http://watfordpalacetheatre.co.uk)

**Oscar Wilde Season Live: The Importance of Being Earnest**

18 November, 2pm - Tickets £15.50

Watford Palace Theatre

Wilde's much-loved masterpiece throws love, logic and language into the air to make one of theatre's most dazzling firework displays. See [watfordpalacetheatre.co.uk](http://watfordpalacetheatre.co.uk)

**The Madness of King George III**

20 November, 7pm - Tickets £15.50

Watford Palace Theatre

Written by one of Britain's best-loved playwrights Alan Bennett, this epic play was also adapted into a BAFTA Award-winning film. Live from Nottingham Playhouse. See [watfordpalacetheatre.co.uk](http://watfordpalacetheatre.co.uk)

**Ballet Black Double Bill**

21 November, 7.30pm - Tickets £16

Watford Palace Theatre

Returning to Watford Palace, Cassa Pancho's, Ballet Black celebrates dancers of black and Asian descent, showcasing technique, precision and grace in specially commissioned pieces. See [watfordpalacetheatre.co.uk](http://watfordpalacetheatre.co.uk)

**Ruby Wax, the Monk and the Neuroscientist: How To Be Human**

22 November, 8pm - Tickets £20

Watford Palace Theatre

With a little help from monk Gelong Thubten, who explains how the mind works, and neuroscientist Ash Ranpura, who explains where everything that makes us 'us' can be found in the brain. See [watfordpalacetheatre.co.uk](http://watfordpalacetheatre.co.uk)

**The Overtones Christmas Tour**

22 November, 7.30pm - Tickets £42.50, £33.50, £26.50, The Overtones VIP pre-show soiree £103  
Watford Colosseum

The number one vocal harmony group, known for sensational flat-out singing with timeless appeal. See [watfordcolosseum.co.uk](http://watfordcolosseum.co.uk)

**Act2act Youth Theatre presents: Little Shop of Horrors**

22 - 24 November, 7.30pm daily and Saturday matinee 2.30pm - Tickets £8.50

Pump House Theatre and Arts Centre

Little Shop of Horrors is a delectable sci-fi horror musical comedy which tells the story of Seymour, a meek flower shop assistant who happens upon a strange plant. Call the box office on **07914 999984**

**Scott Bradlee's Postmodern Jukebox - Back In Black & White Tour**

24 November, 7pm - Tickets £29, £40.50

Watford Colosseum

This show brings a full band of gifted musicians, with a cast of singers and tons of surprises, reimagining contemporary pop, rock and R&B hits in the style of various yesteryears. See [watfordcolosseum.co.uk](http://watfordcolosseum.co.uk)

**Big Skate**

24 November to 13 January

The Parade, Watford - Ticket prices TBC

Our outdoor rink, made with real ice, will return to The Parade for the festive season, featuring viewing area and bar, serving festive food and drinks for all ages. See [watfordbigevents.co.uk/big-skate](http://watfordbigevents.co.uk/big-skate)

**Ukulele Orchestra of Great Britain With Bells On**  
28 November, 7.30pm - Tickets from £24.50

Watford Colosseum

A little midwinter mischief and a chance for the audience to play or sing-a-long to the odd well known Christmas number. See [watfordcolosseum.co.uk](http://watfordcolosseum.co.uk)  
**Radlett Theatre Company presents: The Hotel of Countess Dracula!**

28 November - 1 December, times vary - Tickets

£12, £10.50 concessions, £8 matinee

Pump House Theatre and Arts Centre

Join Countess Dracula, Prof Van Helsing, Mary Shelley, Dr Frankenstein and a host of vampish creatures in this all new comedy horror from the Award Winning Company that brought you the hilarious and quite brilliant Ben Hur! See [ticketsource.co.uk/radletttheatrecompany](http://ticketsource.co.uk/radletttheatrecompany)

**DECEMBER**

**Santa Claus and the Magical Christmas Journey**

1 - 24 December, times vary - Adult tickets from £14.50

Watford Colosseum

The adventure takes place at Santa's HQ in the North Pole. The Reindeer Sat Nav is programmed and the toys are piled high on the sleigh. Then... chaos strikes! Meet Santa, plus a free gift for everyone in the audience! See [watfordcolosseum.co.uk](http://watfordcolosseum.co.uk)



**Jack and the Beanstalk**

5 December - 5 January, times vary - Tickets from £13

Watford Palace Theatre

The most magical event of the year is back, full of all the ingredients you've come to love about the Watford Palace Theatre Pantomime. See [watfordpalacetheatre.co.uk](http://watfordpalacetheatre.co.uk)

**Christmas Parties at Watford Colosseum**

6, 8, 20, 21 December, 7.30pm - Standard ticket £55, 18+ only

Watford Colosseum

Join us for a night to remember! We'll provide all the glitz, glamour and fun needed to make this a spectacular Christmas party you won't forget! See [watfordcolosseum.co.uk](http://watfordcolosseum.co.uk)

**Troilus and Cressida**

9 December, 2pm - Tickets £15.50

Watford Palace Theatre

Troilus and Cressida swear they will always be true to one another. But in the seventh year of the siege of Troy their innocence is tested, and exposed to the savage corrupting influence of war. Delayed live from the Royal Shakespeare Company. See [watfordpalacetheatre.co.uk](http://watfordpalacetheatre.co.uk)

**Only Fools and 3 Courses - Christmas Special**

11 December, 7pm - Tickets £40

Watford Colosseum

Join us for the Christmas dining event of the year, which combines fine food and comedy action, served up Only Fools and Horse style. See [watfordcolosseum.co.uk](http://watfordcolosseum.co.uk)

**Vivo D'Arte presents: Cinderella Pantomime**

11 - 15 December, 6pm with a Saturday matinee at 1pm - Tickets £10 - £14

Pump House Theatre and Arts Centre

Box Office **01442 800211** or [ticketsource.co.uk/vivodarte](http://ticketsource.co.uk/vivodarte)

**Christmas Carol Concert**

12 December, 7pm - Tickets FREE (donations welcome)

Watford Palace Theatre

Presented by the Watford Palace Community Choir, you are all invited to join them as they sing a medley of carols and festive favourites. See [watfordpalacetheatre.co.uk](http://watfordpalacetheatre.co.uk)

**Tropicana at Christmas**

15 December, 8pm - Tickets £9, 21+ only

Watford Colosseum

It's time to go back to the 80s as Tropicana Nights return for another evening of classic hits and killer dance moves, except this time we're calling all 80s loving sassy Santas to the dance floor. See [watfordcolosseum.co.uk](http://watfordcolosseum.co.uk)

**Antony & Cleopatra**

16 December, 2pm - Tickets £15.50

Watford Palace Theatre

Ralph Fiennes and Sophie Okonedo play Shakespeare's famous fated couple in his great tragedy of politics, passion and power. Delayed live from the National Theatre. Book online at [watfordpalacetheatre.co.uk](http://watfordpalacetheatre.co.uk)

**Rudolph Rave - Family Christmas Disco**

16 December, 2 - 4pm - Tickets £10 adults, £7.50

children, infants free

Watford Colosseum

There's fun for all the family this Christmas at our Rudolph Rave! See [watfordcolosseum.co.uk](http://watfordcolosseum.co.uk)

**Blag Theatre Company presents: Jingle All the Way**

17 - 21 December, 7.45pm daily, Saturday matinee

3pm - Tickets £14

Pump House Theatre and Arts Centre

Come along to the Pump House Theatre for a veritable feast of Christmas delights. See [ticketsource.co.uk/blagtheatre](http://ticketsource.co.uk/blagtheatre) or [blagtheatre.co.uk](http://blagtheatre.co.uk)

**The Snowman screening with score performed live by Orpheus Sinfonia**

17 December, 4.30pm and 6.30pm - Tickets £15.50 adults, £12.50 children

Watford Colosseum

This Christmas, join us on an immersive magical journey and experience the heart-warming tale of The Snowman, screened with live orchestra. See [watfordcolosseum.co.uk](http://watfordcolosseum.co.uk)

**Ladies Night**

19 December, 7.30pm - Tickets £35 including three-course meal

Watford Colosseum

Calling all ladies! Join us this December for an evening full of gorgeous male entertainment, a cheeky drag queen, a devilish cocktail on arrival and a scrumptious three-course meal. See [watfordcolosseum.co.uk](http://watfordcolosseum.co.uk)

**The Nutcracker**

20 December, 7pm - Tickets £15.50

Watford Palace Theatre

The Nutcracker has long been one of the most delightful ways to discover the enchantment of ballet. Tchaikovsky's much-loved music is matched to a magical adventure on Christmas Eve for Clara and her Nutcracker doll. See [watfordpalacetheatre.co.uk](http://watfordpalacetheatre.co.uk)

**The Sleeping Beauty**

22 - 23 December, times vary - Tickets £23.50, concessions £22.00, groups 8+ £21.00, family ticket £82.50

Watford Colosseum

Set to Tchaikovsky's glorious music, see the stunning classical choreography, by Artistic Director Christopher Moore. See [watfordcolosseum.co.uk](http://watfordcolosseum.co.uk)

**New Year's Eve at Watford Colosseum**

31 December, 7.30pm Tickets £65, 16+ only

Watford Colosseum

It's the Colosseum countdown to 2019! Gather your family and friends, let us show you the ultimate New Year's Eve party night! See [watfordcolosseum.co.uk](http://watfordcolosseum.co.uk)



Come and play at one of the best courses in the county.

## **Special Twilight offer for Watford Residents**

Play after 4pm at the following rates:

Monday-Thursday      £20

Friday                      £24

Weekend                  £27

Subject to availability

All bookings and enquiries via the  
booking line on 01923 236866.

Please bring your Everyone Active card\*  
and proof of address with you.

Offer ends 31st October 2018

\*Everyone Active card is available free  
from [www.everyoneactive.com](http://www.everyoneactive.com)

[email golf@westhertsgolfclub.co.uk](mailto:golf@westhertsgolfclub.co.uk)

[www.westhertsgolfclub.co.uk](http://www.westhertsgolfclub.co.uk)



**WATFORD  
BOROUGH  
COUNCIL**

WHGC is operated in partnership with Watford Borough Council

# How your council lines up

In Watford we have an Elected Mayor, Peter Taylor, who was elected for a four-year term on 3 May 2018. You can contact the Mayor if you wish to raise an issue with him directly.



**Peter Taylor**  
Liberal Democrats  
01923 278371  
themayor@watford.gov.uk

Watford Borough is divided into 12 wards. Each ward has three councillors whom you elect to represent you for a four-year term. Councillors can be contacted on the phone numbers shown or by email and are there for you to discuss any issues or concerns you have about your neighbourhood or the town.

## Callowland

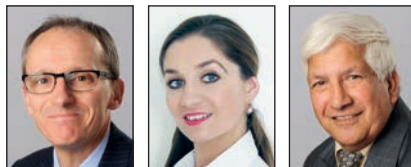


**Sohail Bashir** (Lab)  
07769 355750  
sohail.bashir@watford.gov.uk

**Ian Stotesbury** (LD)  
07999 938202  
ian.stotesbury@watford.gov.uk

**Robbie Laird** (LD)  
07722 014914  
robbie.laird@watford.gov.uk

## Central



**Stephen Bolton** (LD)  
07504 824042  
stephen.bolton@watford.gov.uk

**Aga Dychton** (LD)  
07936 404305  
aga.dychton@watford.gov.uk

**Rabi Martins** (LD)  
01923 228713  
rabi.martins@watford.gov.uk

## Holywell



**Nigel Bell** (Lab)  
01923 256774  
nigel.bell@watford.gov.uk

**Jackie Connal** (Lab)  
07812 362806  
jackie.connal@watford.gov.uk

**Matt Turmaine** (Lab)  
07411 153095  
matt.turmaine@watford.gov.uk

## Leggatts



**Bilqees Mauthoor** (Lab)  
07958 566037  
bilqees.mauthoor@watford.gov.uk

**Richard Smith** (Lab)  
07976 350871  
richard.smith@watford.gov.uk

**Asif Khan** (Lab)  
07931 529164  
asif.khan@watford.gov.uk

## Meriden

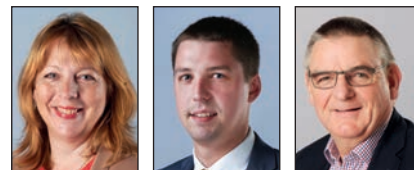


**Amanda Grimston** (LD)  
07702 815172  
amanda.grimston@watford.gov.uk

**Antony Barton** (LD)  
07967 209113  
antony.barton@watford.gov.uk

**Kareen Hattrick** (LD)  
01923 682508  
kareen.hattrick@watford.gov.uk

## Nascot



**Jane Johnson** (LD)  
07815 419910  
jane.johnson@watford.gov.uk

**Mark Hofman** (LD)  
01923 239893  
mark.hofman@watford.gov.uk

**Mark Watkin** (LD)  
01923 255715  
mark.watkin@watford.gov.uk

## Oxhey



**Maggie Parker** (LD)  
07958 518838  
maggie.parker@watford.gov.uk

**Iain Sharpe** (LD)  
01923 440426  
iain.sharpe@watford.gov.uk

**Imran Hamid** (LD)  
07451 989427  
imran.hamid@watford.gov.uk

## Park



**Peter Kloss** (LD)  
070685 760658  
peter.kloss@watford.gov.uk

**Peter Jeffree** (LD)  
07854 842669  
peter.jeffree@watford.gov.uk

**Nikki Steele** (LD)  
07989 905911  
nikki.steele@watford.gov.uk

## Stanborough



**Keith Crout** (LD)  
07972 912711  
keith.crout@watford.gov.uk

**Derek Scudder** (LD)  
01923 492546  
derek.scudder@watford.gov.uk

**Tim Williams** (LD)  
01923 663436  
tim.williams@watford.gov.uk

## Tudor



**Stephen Johnson** (LD)  
07910 391375  
stephen.johnson@watford.gov.uk

**Joe Fahmy** (LD)  
01923 888454  
joe.fahmy@watford.gov.uk

**Darren Walford** (LD)  
01923 336450  
darren.walford@watford.gov.uk

## Vicarage



**Jagtar Singh Dhindsa** (Lab)  
07803 610441  
jagtar.dhindsa@watford.gov.uk

**Mo Mills** (Lab)  
07956 212238  
mo.mills@watford.gov.uk

**Nasreen Shah** (Lab)  
01923 253783  
nasreen.shah@watford.gov.uk

## Woodside



**Stephen Cavinder** (LD)  
07941 306219  
stephen.cavinder@watford.gov.uk

**Glen Saffery** (LD)  
07939 218788  
glen.saffery@watford.gov.uk

**Karen Collett** (LD)  
01923 661616  
karen.collett@watford.gov.uk

(Lab) = Labour (LD) = Liberal Democrats

# **FIREWORKS NIGHT IN CASSIOBURY PARK**



## **SATURDAY 3 NOVEMBER**



**WE ARE  
WATFORD  
BIG EVENTS**

**LIVE MUSIC FROM 6PM, BONFIRE LIT FROM 7PM,  
FIREWORKS AT 7.30PM, FOOD AND DRINK STALLS.**

**[watfordbigevents.co.uk](http://watfordbigevents.co.uk)**



**WATFORD  
BOROUGH  
COUNCIL**